



LOT 16

Clarke St, Rouse Hill NSW 2155

Ground Floor	83.16m ²
First Floor	90.63m ²
Garage	33.70m ²
Total	211.22m²



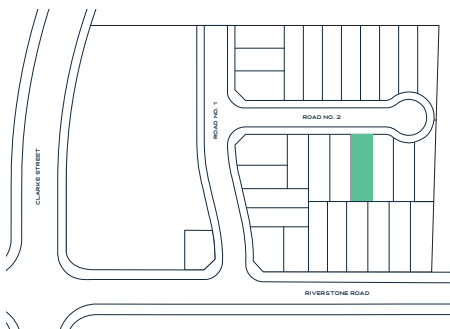
5



3.5



2



TURNKEY INCLUSIONS

900mm gas wok cooktop with cast-iron trivets, 900mm ducted rangehood & 600mm electric oven.

20mm zero silica stone kitchen benchtops with square edging and soft close kitchen drawers & cupboards (in accordance with selected colour scheme).

Actron dual zone ducted reverse cycle heating & cooling system.

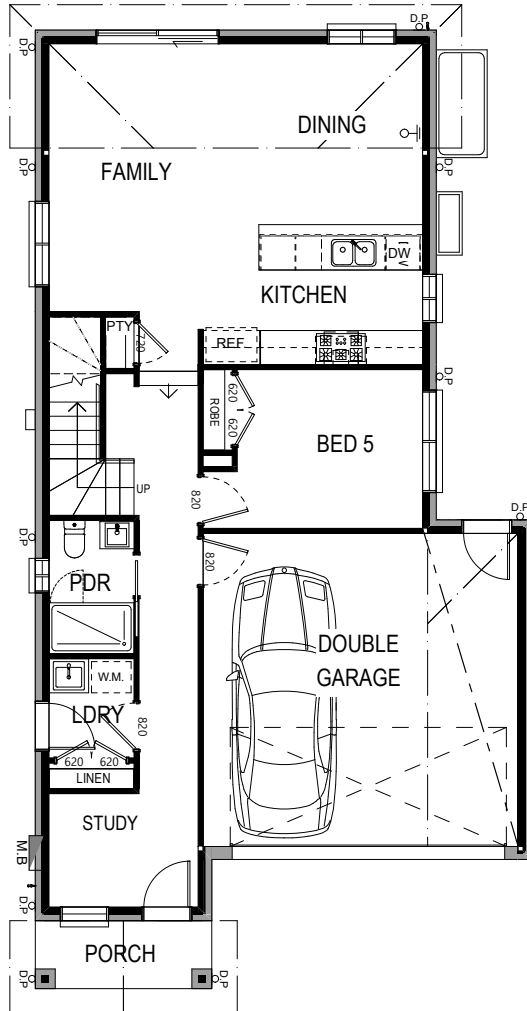
Latest in hybrid flooring (heat, stain, water & bacteria resistant).

Built-in sliding mirrored storage.

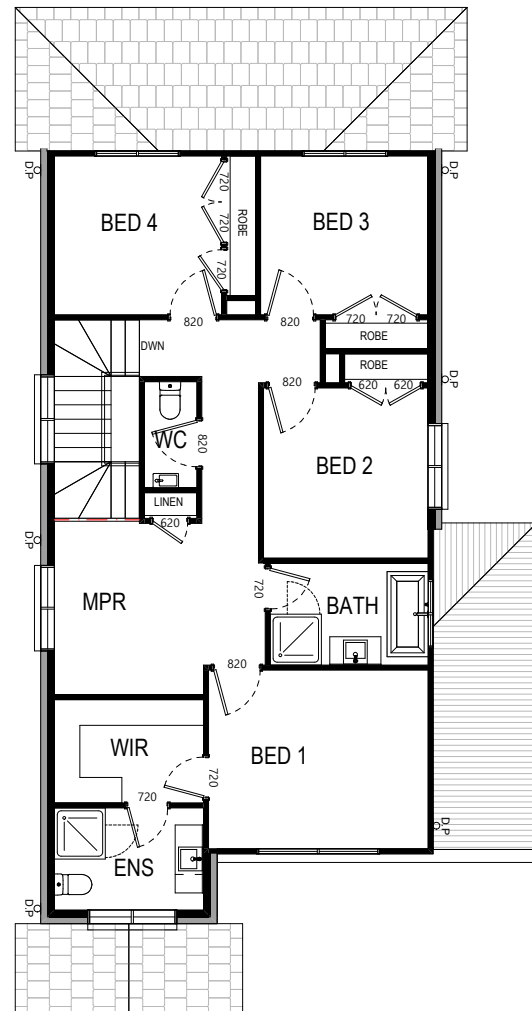
LED downlights throughout kitchen & bathroom areas.

Sectional overhead Colorbond garage door with auto opener (2 hand-held transmitters & 1 wall-mounted transmitter).

Landscaping to front and rear yards, concrete driveway, boundary fencing, letterbox and clothesline.



GROUND FLOOR



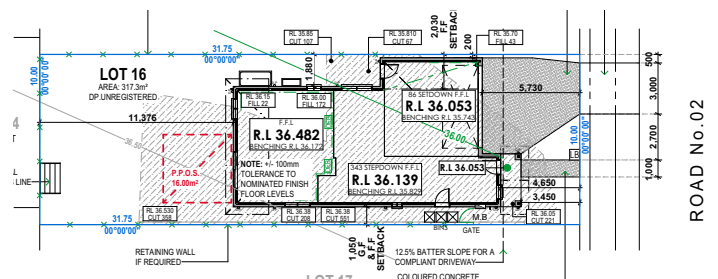
FIRST FLOOR

5 3.5 2

Land Size 317.3m²

House Size 211.22m²

Frontage 10m



SITE PLAN