



LOT 17

Clarke St, Rouse Hill NSW 2155

Ground Floor	91.29m ²
First Floor	103.2m ²
Garage	19.81m ²
Total	225.67m²



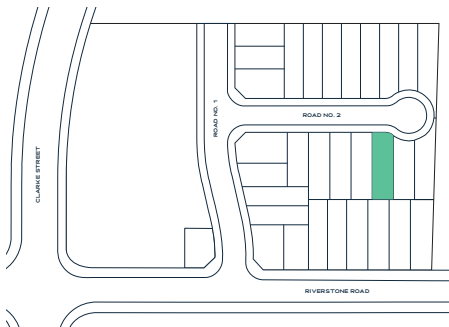
4



2.5



1



TURNKEY INCLUSIONS

900mm gas wok cooktop with cast-iron trivets, 900mm ducted rangehood & 600mm electric oven.

20mm zero silica stone kitchen benchtops with square edging and soft close kitchen drawers & cupboards (in accordance with selected colour scheme).

Actron dual zone ducted reverse cycle heating & cooling system.

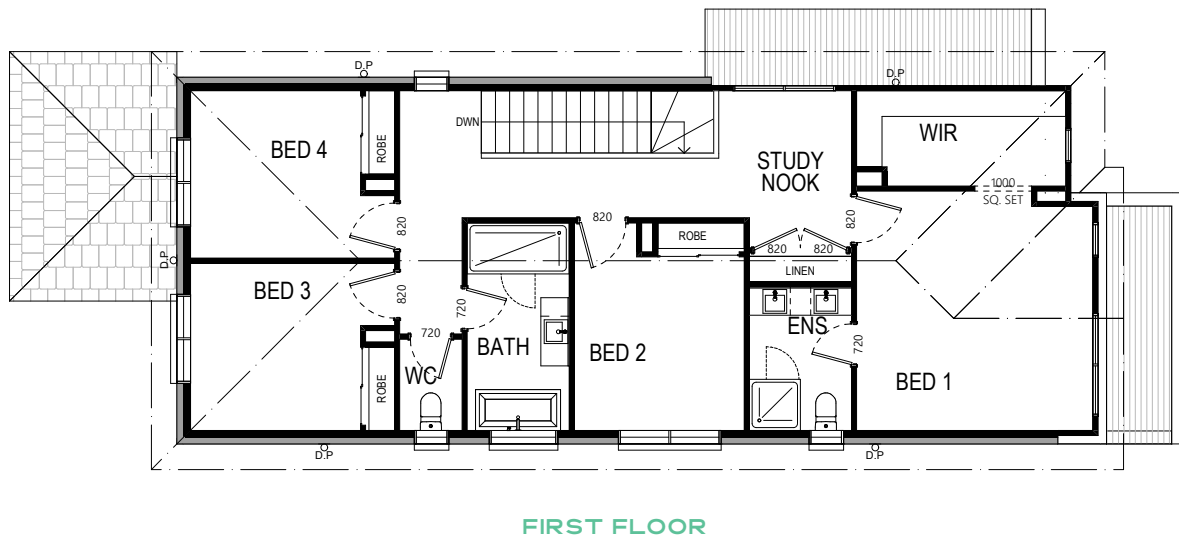
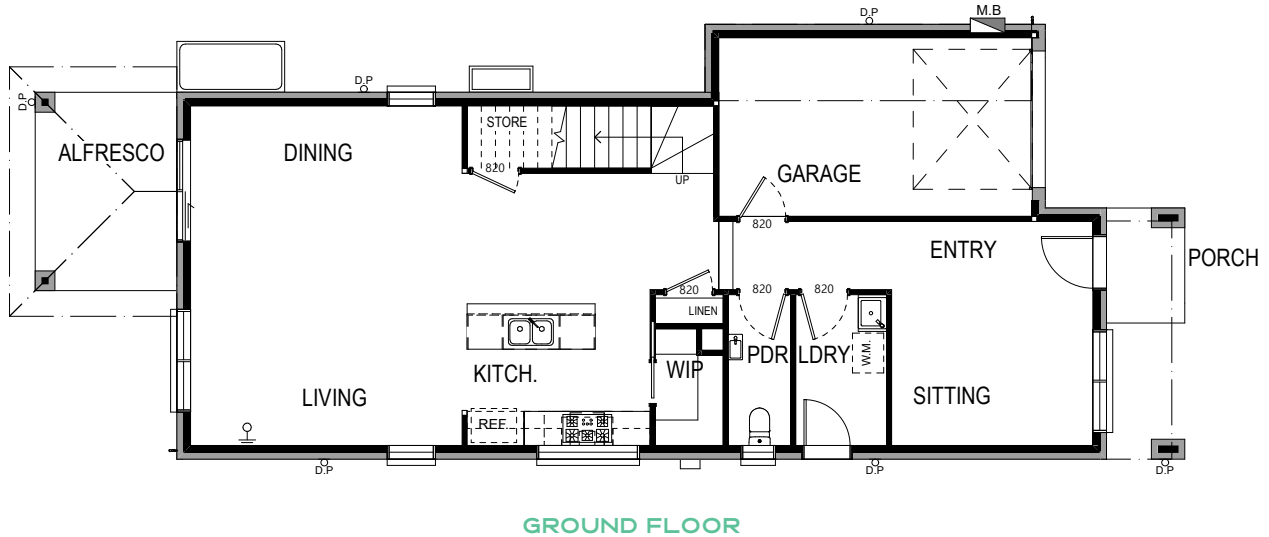
Latest in hybrid flooring (heat, stain, water & bacteria resistant).

Built-in sliding mirrored storage.

LED downlights throughout kitchen & bathroom areas.

Sectional overhead Colorbond garage door with auto opener (2 hand-held transmitters & 1 wall-mounted transmitter).

Landscaping to front and rear yards, concrete driveway, boundary fencing, letterbox and clothesline.

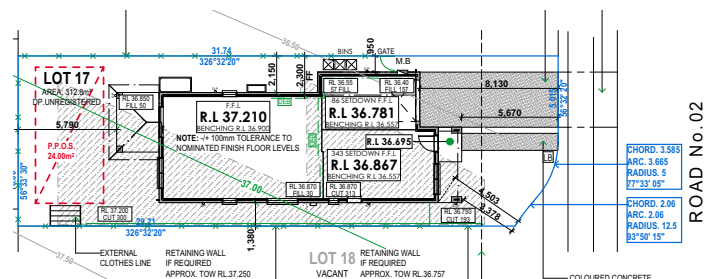


4 2.5 1

Land Size 312.8m²

House Size 225.67m²

Frontage 10m



SITE PLAN